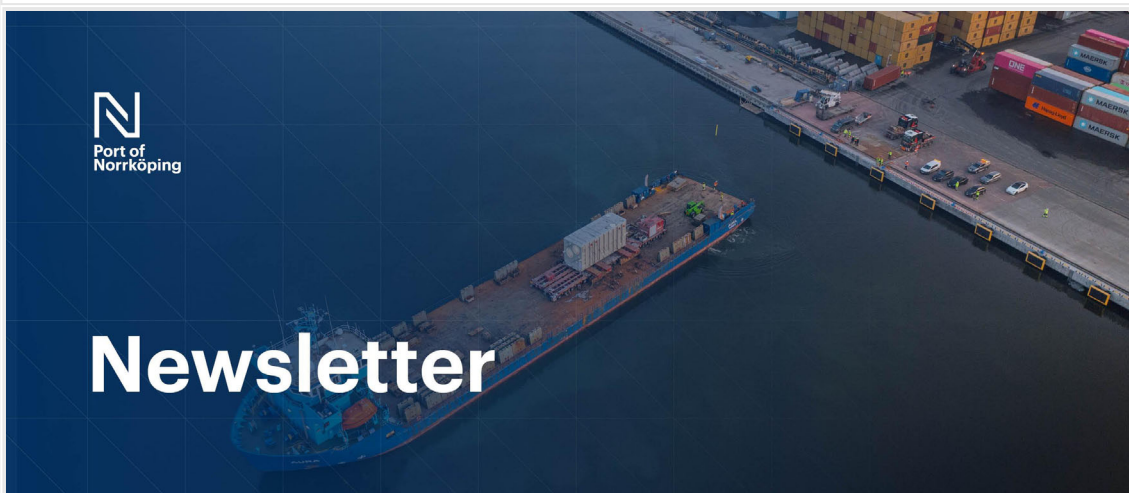


To view this email as a web page, go [here](#).

- June 2026 -

We regularly publish news across our various channels. This newsletter contains a selection and summary of our latest updates.



Improved capacity for our customers' business

Many of you already know me from various roles within the company, most recently as Deputy CEO. My hope is that this provides a sense of continuity and reassurance in our collaboration, and that we will continue to be a close and reliable part of our customers' daily operations.

It is in our interactions with customers that our value is created—through accessibility, expertise, and close collaboration. In an increasingly challenging environment, our ambition is clear: to continue developing our offering, strengthening relationships, and contributing to our customers' business.

One current initiative that clearly strengthens our role in our customers' supply chains is the new heavy-lift quay, which we brought into operation this spring. It increases our capacity to handle both export and import flows in an efficient and safe manner.

For Swedish export industries, this means improved conditions for heavy and complex transports—particularly for major and important customers such as Hitachi Energy and Siemens Energy, who have worked with us for many years.

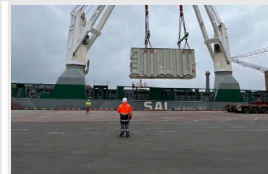
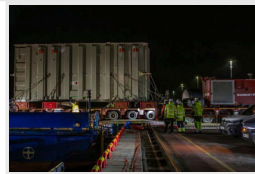
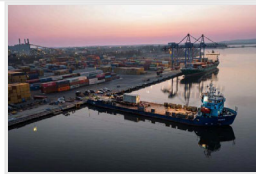
At the same time, the new quay creates even better opportunities to handle advanced project cargo, an area where Port of Norrköping has extensive experience.

It also opens up for more customers and new business across all types of goods.

Wishing you a pleasant summer!
Ola Hjärtström, Acting CEO



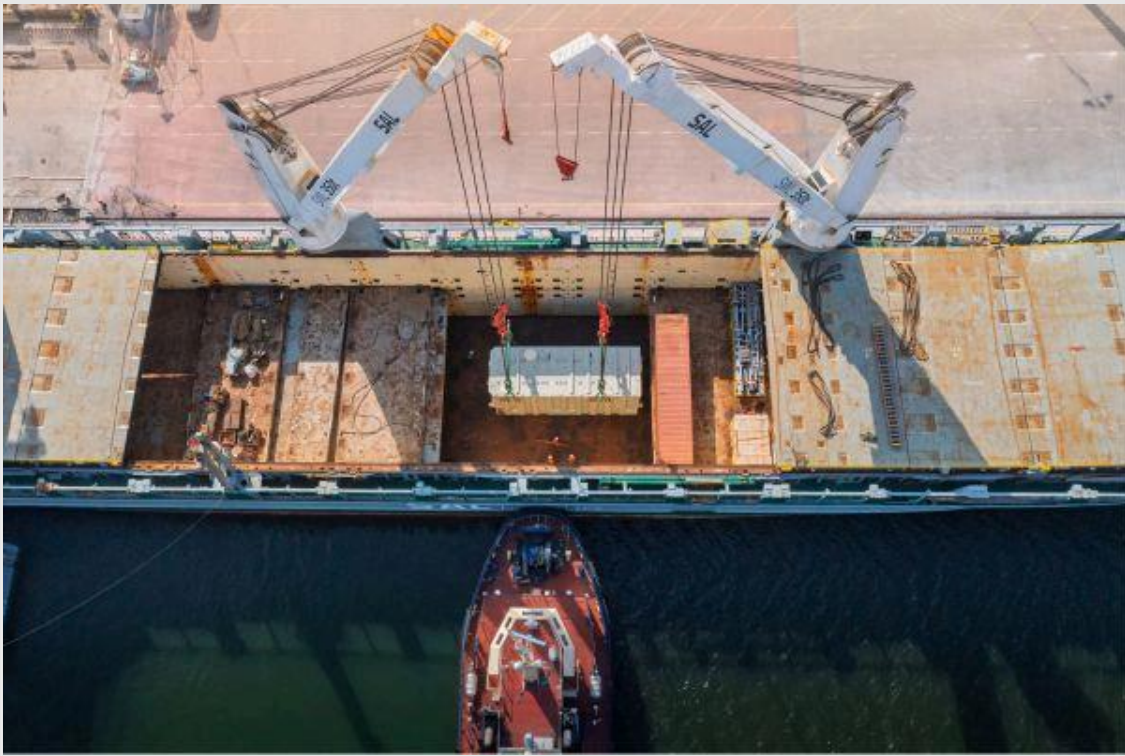
Ola Hjärtström assumed the role of Acting CEO on June 1, succeeding Henrik Åkerström, who left for a new position after eight years as CEO.



Premiere of new heavy-lift quay with Hitachi Energy's record-breaking transformer

The first shipment from the newly built heavy-lift quay at the Port of Norrköping has recently been carried out. The inaugural cargo could hardly have been more spectacular—a record-breaking transformer from Hitachi Energy, weighing an impressive just over 400 tonnes.

[Read more](#)



Curious to see how the operation was carried out? Watch the film about the premiere of the new heavy-lift quay and follow the cargo's journey from Hitachi Energy's factory in Ludvika to Norrköping. (YouTube)

[Watch the film here](#)



Tommy Andersson takes over the operational management of traffic and production planning

The department also includes Joakim Aréus, Production Planner, and Joakim Pettersson, Harbour Master. Together, they form a strong team with broad experience and complementary expertise. Close customer dialogue and collaboration are key principles in their work.



New Head of the Container Terminal is Johannes Sandgren

Johannes Sandgren is the new Terminal Manager for the container terminal at the Port of Norrköping. With experience in production, logistics, and supply chain, he looks forward to helping develop the operations together with the team.

[Read interview](#)

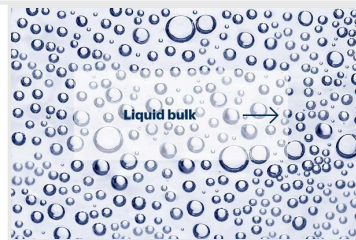
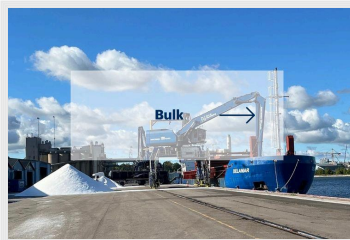
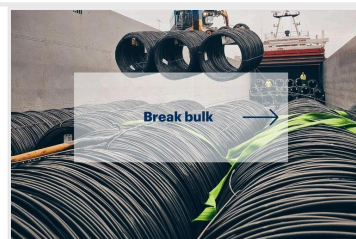
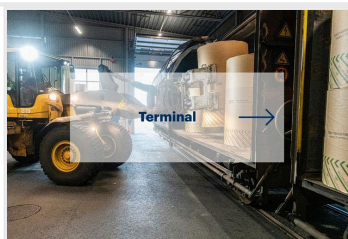
[Read interview](#)



Next-generation pre-advice service Preadvice 2.0 coming soon

We are launching Preadvice 2.0, a further development of our current pre-advice service that gives hauliers and drivers better control over the entire transport flow. With real-time information, improved overview, and smarter planning support, the service contributes to a more efficient terminal visit.

[Read more about upcoming Preadvice 2.0](#)



OPERATIONAL INFORMATION

The latest information on traffic, maintenance work, or other changes can always be found under operational updates on our website.